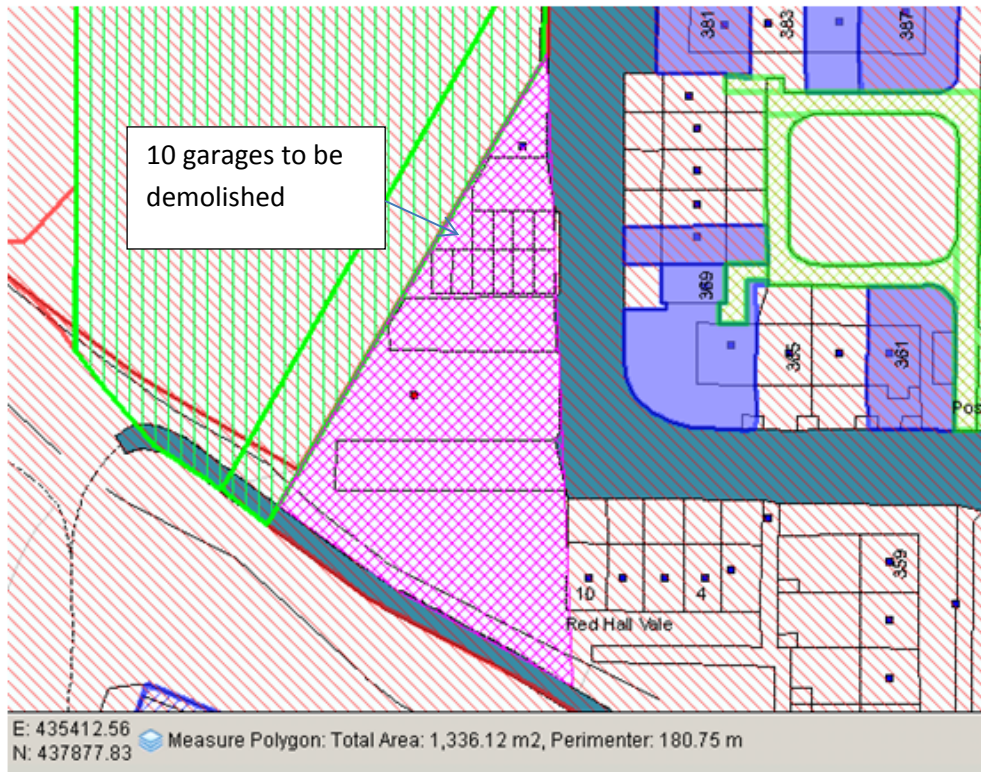
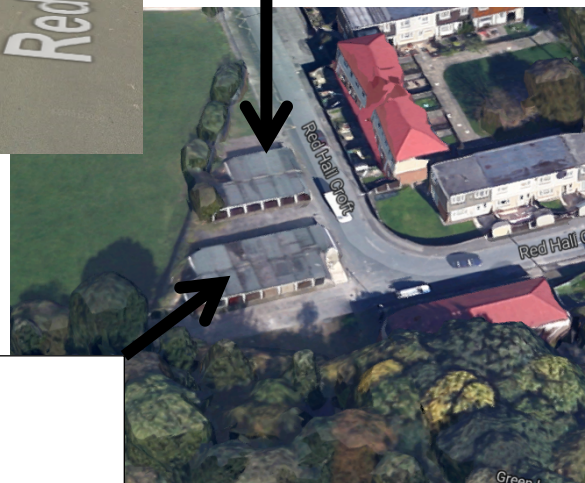


APPENDIX 1 – Proposed demolition of garages at Red Hall Croft – SITE A – 10 Garages

Red Hall Croft Site A Plan, LS14 1NW



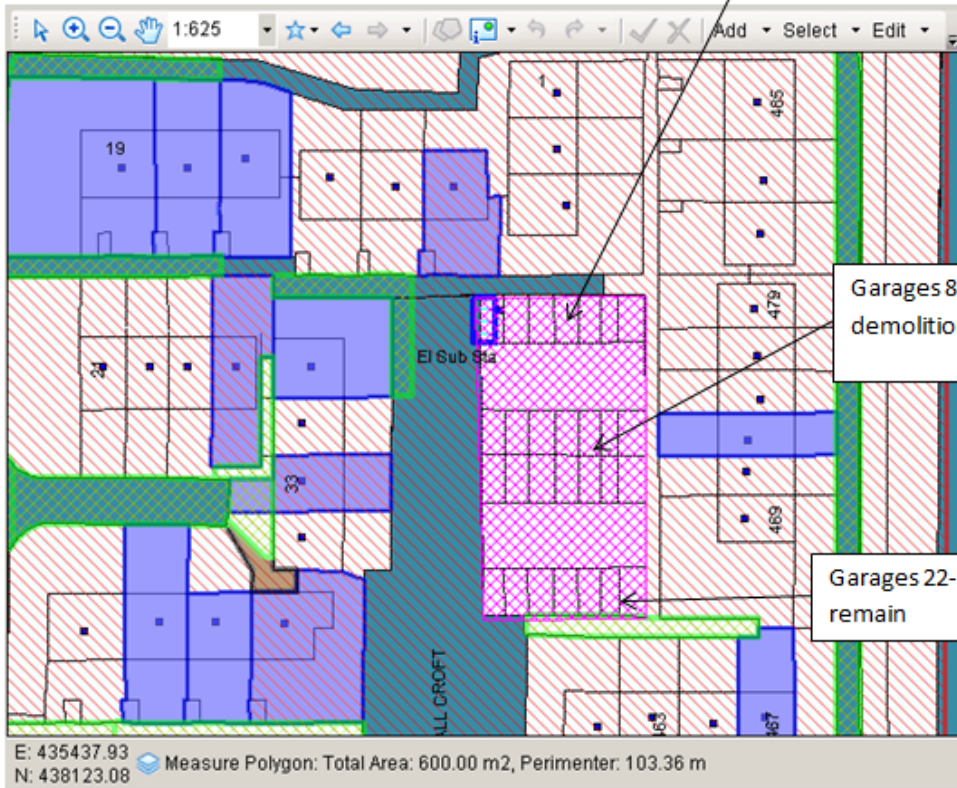
Location of 10 garages now proposed for demolition



Garages that have previously been demolished (2011)

Red Hall Croft Site B Plan, LS14 1NW

Garages 1 - 7 to remain



Garages 8-21 for demolition

Garages 22-27 to remain

E: 435437.93
N: 438123.08 Measure Polygon: Total Area: 600.00 m², Perimeter: 103.36 m